

## ESCHLER Collection Highlights Winter 2012/13

### ATHLETIC DIVERSITY MADE IN SWITZERLAND

**In winter 2012/13, ESCHLER demonstrates the diversity of athletic knitwear: the highlights include highly functional and fashionable foam laminates for skiwear and different qualities with stylish retro designs. The Swiss brand further presents various soft, elastic fabrics for accessories that offer great isolation properties and are wind- and waterproof. With its new collection, Eschler yet again underlines its heritage as experts for smart, technical and comfortable knitwear.**

#### Skiwear – uniting function & fashion

Eschler achieves a unique synthesis of state-of-the-art technology and style in its winter 2012/13 collection. Engineered particularly with close fitting skiwear in mind, the Swiss company presents a range of highly functional 3-layer laminates.

On the outside, Eschler utilizes fabrics with appealing surface structures. On the inside, the different qualities range from smooth jersey material to cosy micro-fleece. These foam laminates are a special Eschler construction: they have great stretch quality, are hydrophobic on the outside and offer fantastic air permeability.

The embossed designs present a special highlight in Eschler's fashionable skiwear collection. They create sophisticated high/low and shiny/matt effects. Smooth, homogeneous surfaces can be diversified with the embossing technology. Thus the possibility of variations and combinations is very extensive.

A strong trend for winter 2012/13 are traditional Nordic designs. The jacquard fabrics are made of 100% Polyester and are produced in different weights. Eschler achieves a natural look by using various applications: on first sight, the synthetic fabrics can hardly be told apart from wool qualities. They are used as outer material for laminates and perfectly complement Eschler's "Technowool" product range.

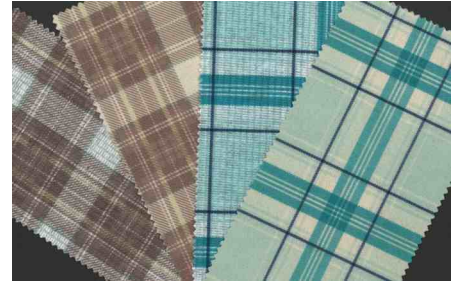


### Technical shirts – into the future with retro design

The 100% micro-fibre polyester knitwear is printed with a variety of check patterns and comes in three different fabric qualities:

- a classic micro-fleece that is brushed and cropped on one side, which makes it very pilling and abrasion resistant.
- a jersey made from 100% micro-fibre polyester: soft and smooth on both sides.
- for the winter collection, Eschler has created a cord material with mélange effect. The inside is brushed, the outer, however, deliberately comes as terry quality to achieve the special retro look.

The transfer print creates a luxurious, slightly shiny look. Eschler thus presents a selection of technical, easy to process knitwear that perfectly balances sophisticated design with technical comfort.



### Accessories – add more function

To answer the rapidly growing demand for highly functional knitwear for accessories (gloves, hats etc.), Eschler has developed a range of exceptional, specialised qualities. Technical knitwear is the ideal solution for brands with high demands: Eschler's collection offers soft, elastic, wind- and waterproof fabrics that feature fantastic isolation properties and have a structured surface.

The vast selection of 100% synthetic fabrics can be modified on client's request. It includes one-side brushed material as well as 2- and 3-layer laminates.

A range of spacer knits in different widths and yarn combinations have been added to the program. They are offered as single qualities, bonded fabrics or even in a wind- and waterproof versions with membrane. The comprehensive knitwear range for accessories is complemented by the coated fabrics in different colours, which are applied on different material.



For more info see [www.eschler.com](http://www.eschler.com)



High-Res data download at:

[http://www.k-g-k.com/download/Eschler\\_SkiWear\\_F12\\_HR.jpg](http://www.k-g-k.com/download/Eschler_SkiWear_F12_HR.jpg)

[http://www.k-g-k.com/download/Eschler\\_Check\\_F12\\_HR.jpg](http://www.k-g-k.com/download/Eschler_Check_F12_HR.jpg)

[http://www.k-g-k.com/download/Eschler\\_Accessories\\_F12\\_HR.jpg](http://www.k-g-k.com/download/Eschler_Accessories_F12_HR.jpg)

#### PR Contact

KGK – Kern Gottbrath Kommunikation

Sissi Pärsch

+49 – 89 – 30 76 66-3

[eschler@K-G-K.com](mailto:eschler@K-G-K.com)



swiss **TEXTILES**



ESCHLER – Touch Swiss Comfort: Founded in 1927, the Christian Eschler AG quickly advanced to become one of the world's leading manufacturers of functional knit fabrics. Today, the family owned business, based in Bühler/ Switzerland, is managed by the third Eschler generation and specialises in sportswear, work wear, technical textiles and lingerie. As one of the first textile companies, Eschler committed itself to an environmentally friendly production cycle by becoming a bluesign® system partner ([www.bluesign.com](http://www.bluesign.com)). The independent bluesign® standard meets strict requirements regarding sustainability, health and safety as well as resource efficiency.